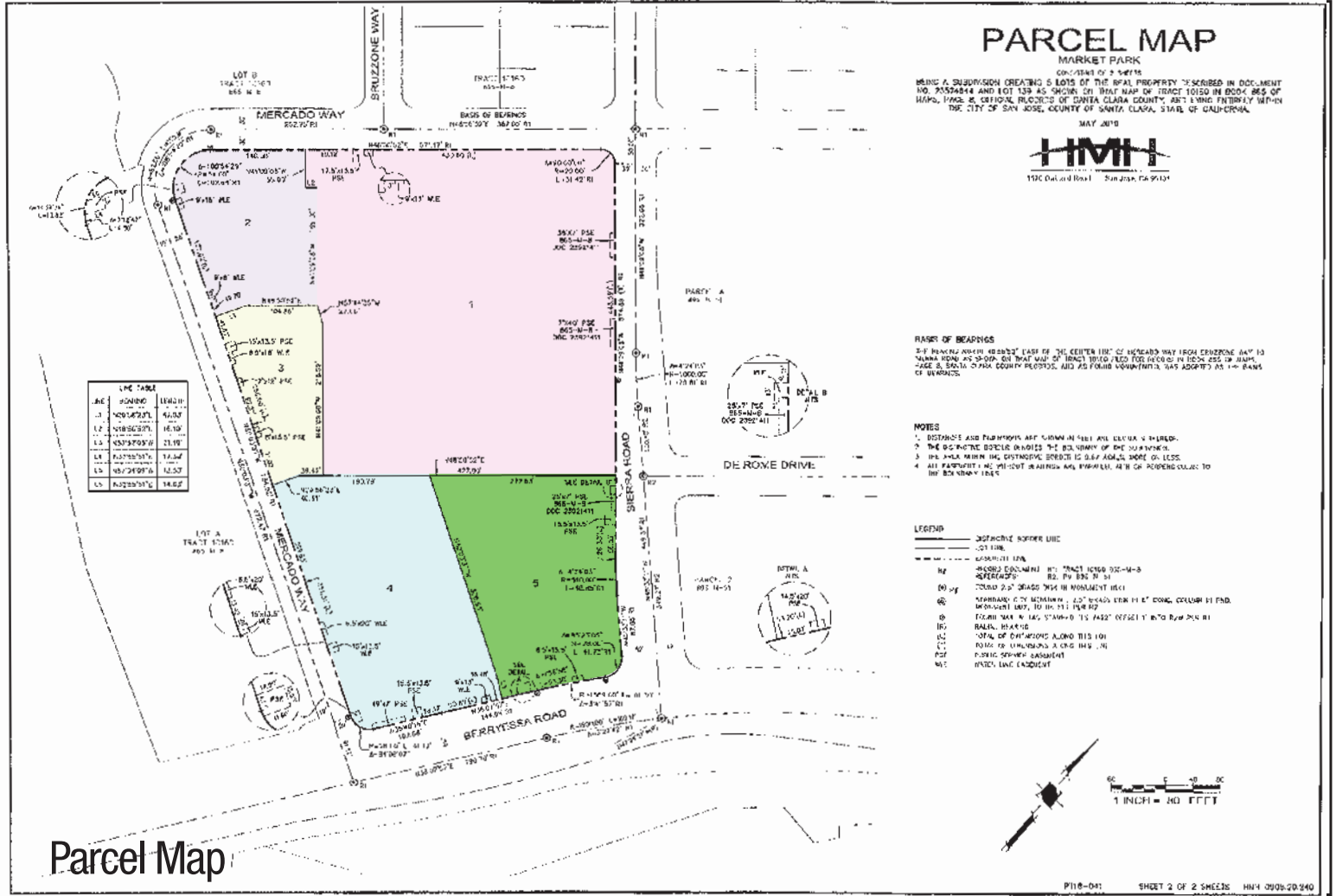
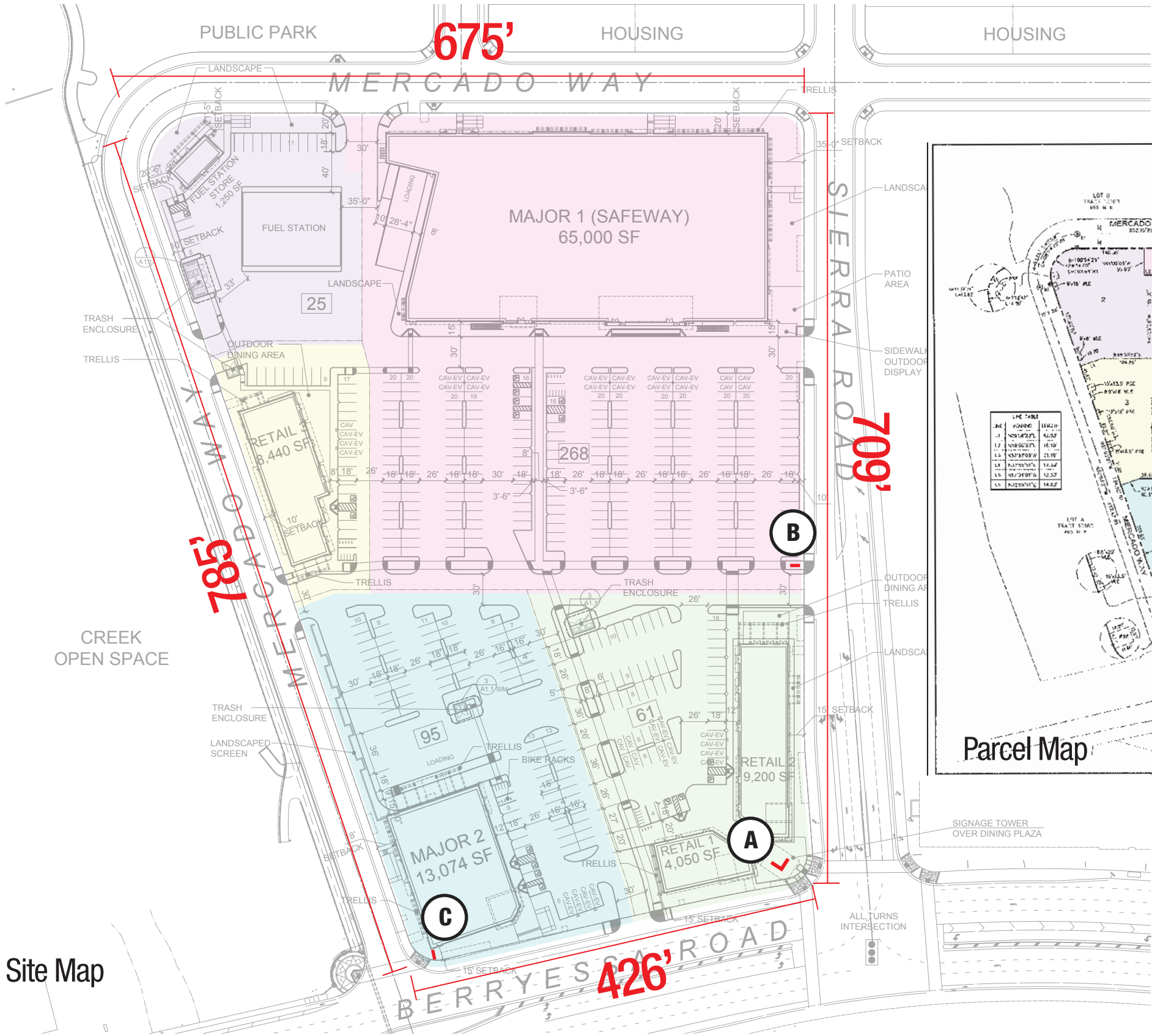


Market Park S.C. San Jose, CA

Tenant Signage Criteria



150 Executive Park Blvd, Suite 2100
San Francisco, CA 94134
T. 415.869.6460
F. 415.869.6480





150 EXECUTIVE PARK BLVD., SUITE 2100
SAN FRANCISCO, CA 94134
T 415.869.6460
F 415.869.6480

CA STATE CONTRACTORS LICENSE #826051www.adart.com

| PROJECT: Market Park Anchor Monument | | REVISION / DATE / DESCRIPTION | |
|---|--|---|--|
| LOCATION: 11861 Berryessa Rd, San Jose, CA | | #1 01/18/19 Revised C & D, Added Site Map | |
| DATE: 01/03/19 | | #2 01/25/19 Revised A, Added Site Map | |
| SALES: Terry Long | | #3 01/31/19 Revised Package | |
| DESIGNER: Ron Sellers | | #4 02/04/19 Updated Pylon on Site Map | |
| SCALE: See Callouts | | #5 03/19/19 Updated Monument Heights & Setbacks | |
| SERVER: SFSERVER/ART DEPARTMENT/2018Artwork/Shoppes at Market Park Anchor Monument_190103 | | | |

| APPROVALS | |
|-----------|--|
| SALES: | |
| CUSTOMER: | |
| LANDLORD: | |

CONCEPTUAL DRAWINGS ONLY:
Dimensions are approximate and may change due to construction factors or exact field conditions. Colors shown are as close as printing will allow. Always follow written specifications.

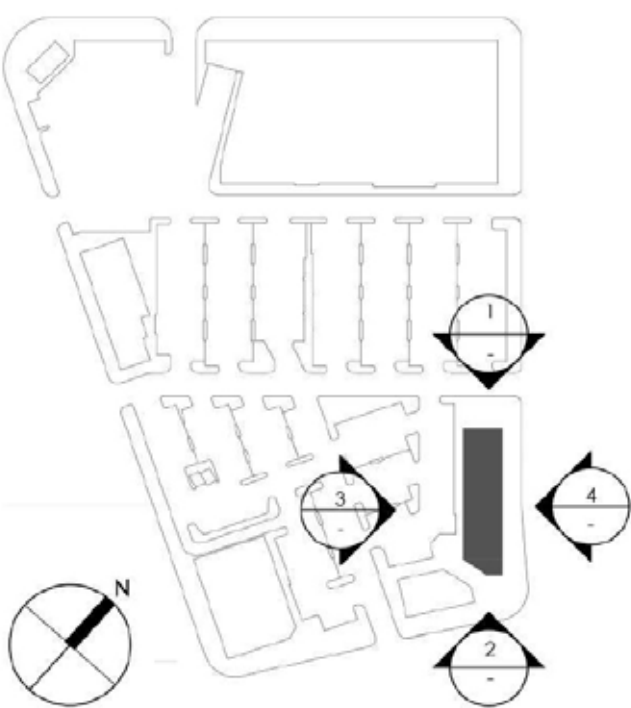
ALL RIGHTS RESERVED:
This design has been created for you in connection with a project being planned for you by ADART. It may not be shown to anyone outside your organization, and may not be reproduced in any manner without prior consent.

SHEET

1

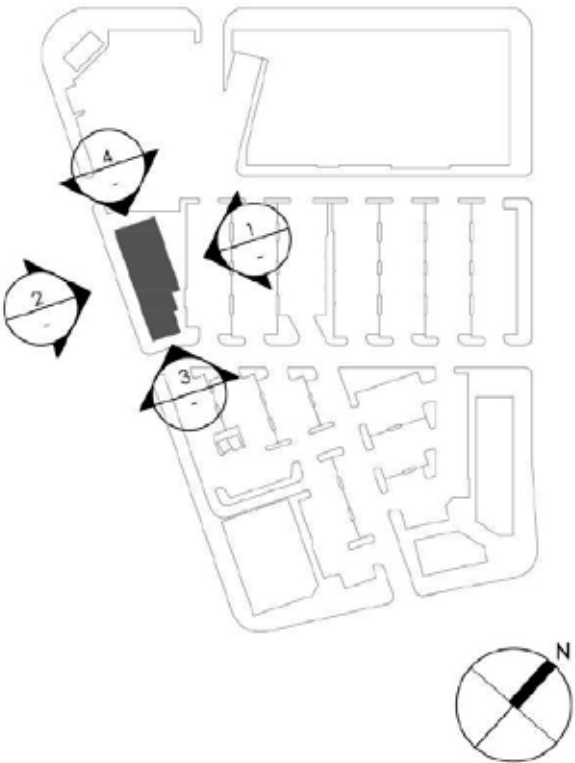
RETAIL BUILDING ELEVATIONS

F.2 ELEVATIONS, RETAIL BUILDINGS 2



RETAIL BUILDING ELEVATIONS

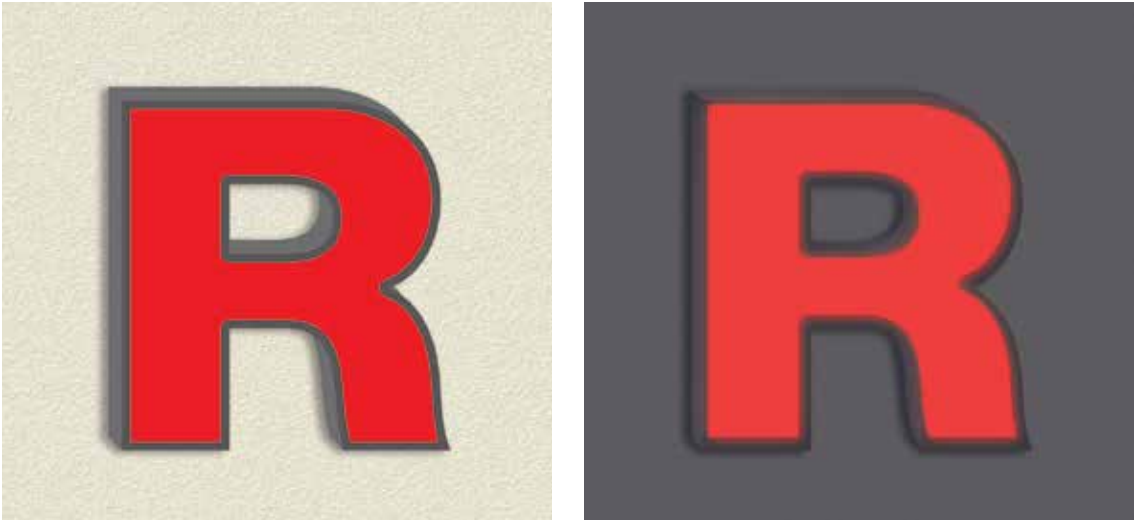
F.3 ELEVATIONS, RETAIL BUILDINGS 3



ILLUMINATED SIGN TYPES

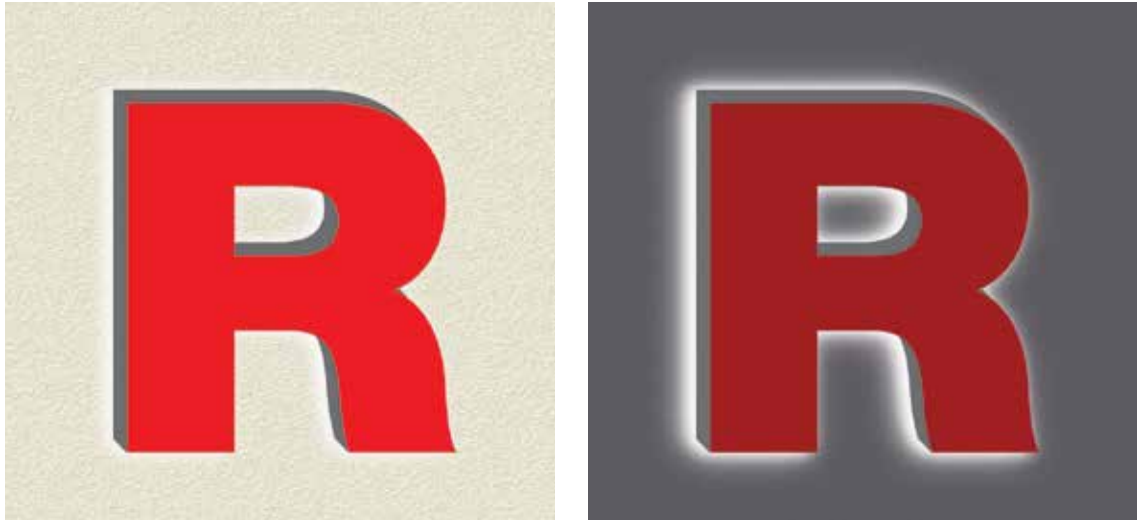
G.1 FACE ILLUMINATED

G.2 HALO ILLUMINATED



Day Night

Illuminated Lexan Faced Channel Letter display with through face illumination. Use standard aluminum construction with Matthews (or equivalent) satin acrylic polyurethane finish. Faces use translucent Lexan with trim cap. Illuminate with LED. Paint trim caps and returns any color.

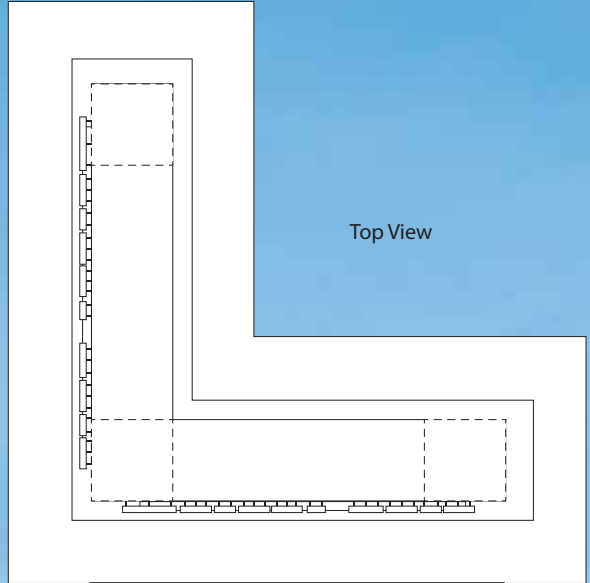
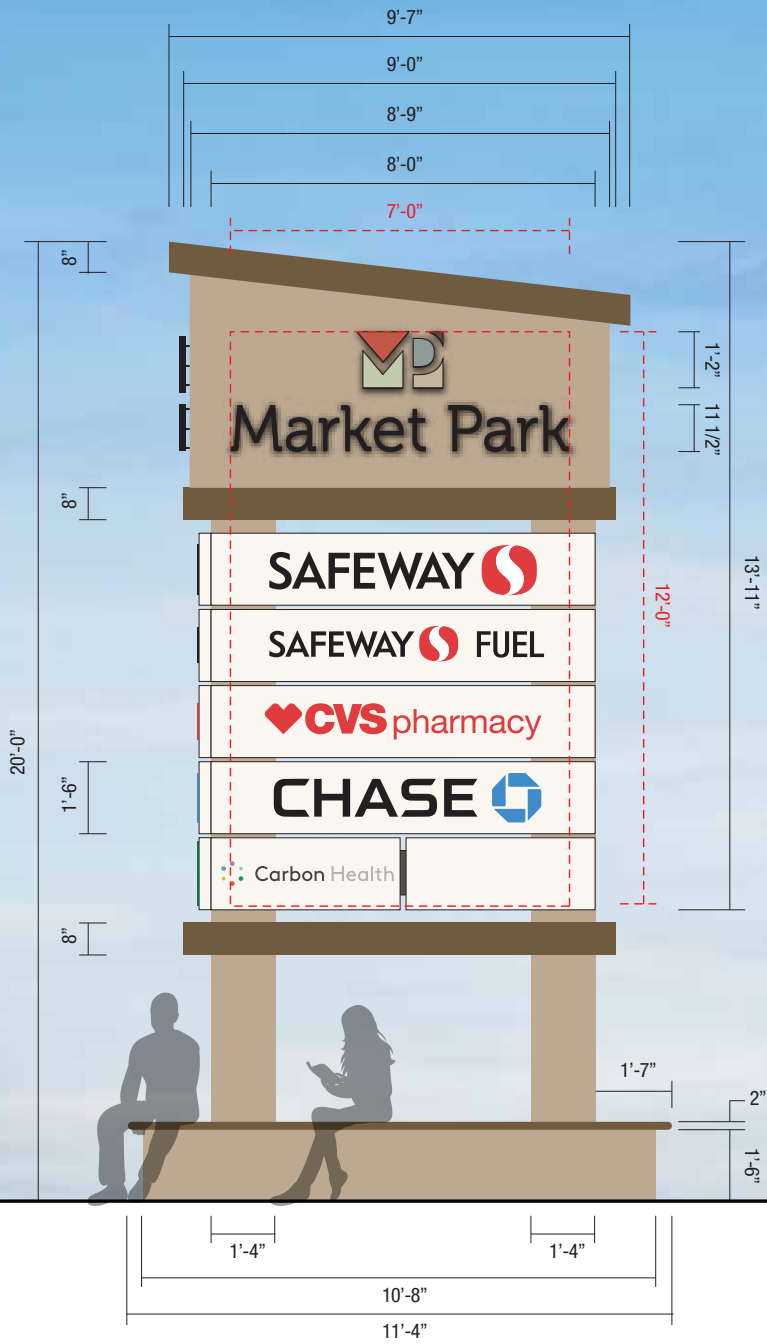


Day Night

Illuminated Reverse Pan Channel Letter display with halo illumination. Use standard aluminum construction with Matthews (or equivalent) satin acrylic polyurethane finish. Illuminate with LED. Paint faces and returns any color.

Material Thickness Guide:
Lexan/Plexiglas Faces .125" Min
Aluminum Letter Backs .063" Min.
Aluminum Letter Returns .040" Min

20' Pylon



Top View

Sign Copy Area 7'x12' = 84 Sqft

A ILLUMINATED PYLON SIGN SPECIFICATIONS

Manufacture & Install One (1) S/F "L" shaped Illuminated Pylon Sign, as shown

Scale: 1/4" = 1'-0"

COLOR SCHEDULE

| | | | | | |
|---|--|---|--|---|-----------------------|
|  | Client Color: Deep Salmon CMYK 0,57,66,14 cross# PMS 7416 C cross# MP-31791 |  | Client Color: Charcoal CMYK 0,0,0,72 cross# PMS 446 C cross# MP-52274 |  | MP-07418 Cloud Cover |
|  | Client Color: Grass CMYK 6,0,20,19 cross# PMS 5807 C cross# MP-00815 |  | Client Color: Sand CMYK 0,7,20,24 cross# PMS 453 C cross# MP-00590 |  | MP-12813 Beige Frame |
|  | Client Color: Blue Stone CMYK 19,0,0,34 cross# PMS 5493 C cross# MP-31791 |  | MP-SOA929SP Black |  | MP-03078 Spanish Moss |

ALL COLORS TO BE CONFIRMED BY CLIENT

| PROJECT: Market Park Anchor Monument | REVISION / DATE / DESCRIPTION |
|---|---|
| LOCATION: 11861 Berryessa Rd, San Jose, CA | #1 01/18/19 Revised C & D, Added Site Map |
| DATE: 01/03/19 | #2 01/25/19 Revised A, Added Site Map |
| SALES: Terry Long | #3 01/31/19 Revised Package |
| DESIGNER: Ron Sellers | #4 02/04/19 Updated Pylon on Site Map |
| SCALE: See Callouts | #5 02/26/19 Updated Monument Heights & Setbacks |
| SERVER: SFSERVER/ART DEPARTMENT/2018Artwork/Shoppes at Market Park Anchor Monument_190103 | |

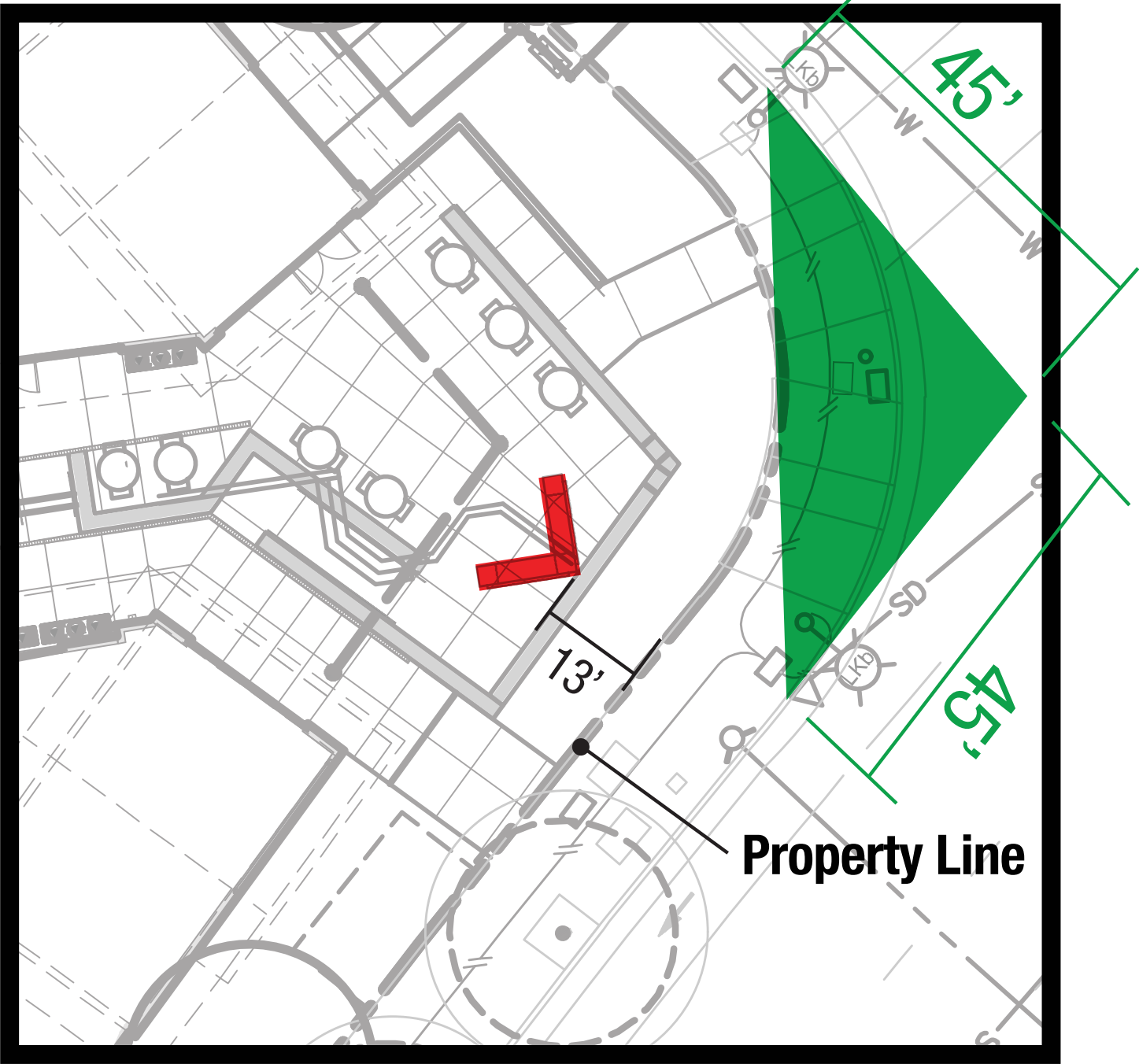
| APPROVALS |
|-----------|
| SALES: |
| CUSTOMER: |
| LANDLORD: |

CONCEPTUAL DRAWINGS ONLY:
Dimensions are approximate and may change due to construction factors or exact field conditions. Colors shown are as close as printing will allow. Always follow written specifications.

ALL RIGHTS RESERVED:
This design has been created for you in connection with a project being planned for you by ADART. It may not be shown to anyone outside your organization, and may not be reproduced in any manner without prior consent.

SHEET

2



Site Map: Corner Triangle



150 EXECUTIVE PARK BLVD., SUITE 2100
SAN FRANCISCO, CA 94134
T 415.869.6460
F 415.869.6480

CA STATE CONTRACTORS LICENSE #826051www.adart.com

| PROJECT: Market Park Anchor Monument | REVISION / DATE / DESCRIPTION | APPROVALS | CONCEPTUAL DRAWINGS ONLY: Dimensions are approximate and may change due to construction factors or exact field conditions. Colors shown are as close as printing will allow. Always follow written specifications. ALL RIGHTS RESERVED: This design has been created for you in connection with a project being planned for you by ADART. It may not be shown to anyone outside your organization, and may not be reproduced in any manner without prior consent. | SHEET <div>3</div> |
|---|---|-----------|--|-----------------------|
| LOCATION: 11861 Berryessa Rd, San Jose, CA | #1 01/18/19 Revised C & D, Added Site Map | SALES: | | |
| DATE: 01/03/19 | #2 01/25/19 Revised A, Added Site Map | CUSTOMER: | | |
| SALES: Terry Long | #3 01/31/19 Revised Package | LANDLORD: | | |
| DESIGNER: Ron Sellers | #4 02/04/19 Updated Pylon on Site Map | | | |
| SCALE: See Callouts | #5 03/19/19 Updated Monument Heights & Setbacks | | | |
| SERVER: SFSERVER/ART DEPARTMENT/2018Artwork/Shoppes at Market Park Anchor Monument_190103 | | | | |

#11 08/01/19 Updated Parcel Maps #12 10/04/19 Complete Package Build #13 10/07/19 Callouts Updated #14 10/11/19 Moved Sign C #15 11/20/19 Updated Corner Detail Sht 3 #16 11/26/19 Removed D



PROJECT: Market Park Anchor Monument

LOCATION: 11861 Berryessa Rd, San Jose, CA
DATE: 01/03/19
SALES: Terry Long
DESIGNER: Ron Sellers
SCALE: See Callouts
SERVER: SFSERVER/ART DEPARTMENT/2018Artwork/Shoppes at Market Park Anchor Monument_190103

REVISION / DATE / DESCRIPTION

#1 01/18/19 Revised C & D, Added Site Map
#2 01/25/19 Revised A, Added Site Map
#3 01/31/19 Revised Package
#4 02/04/19 Updated Pylon on Site Map
#5 02/26/19 Updated Monument Heights & Setbacks

APPROVALS

SALES:
CUSTOMER:
LANDLORD:

CONCEPTUAL DRAWINGS ONLY:
Dimensions are approximate and may change due to construction factors or exact field conditions. Colors shown are as close as printing will allow. Always follow written specifications.

ALL RIGHTS RESERVED:
This design has been created for you in connection with a project being planned for you by ADART. It may not be shown to anyone outside your organization, and may not be reproduced in any manner without prior consent.

SHEET

4



Sign Copy Area 8'-0"x3'-3"= 26 Sqft

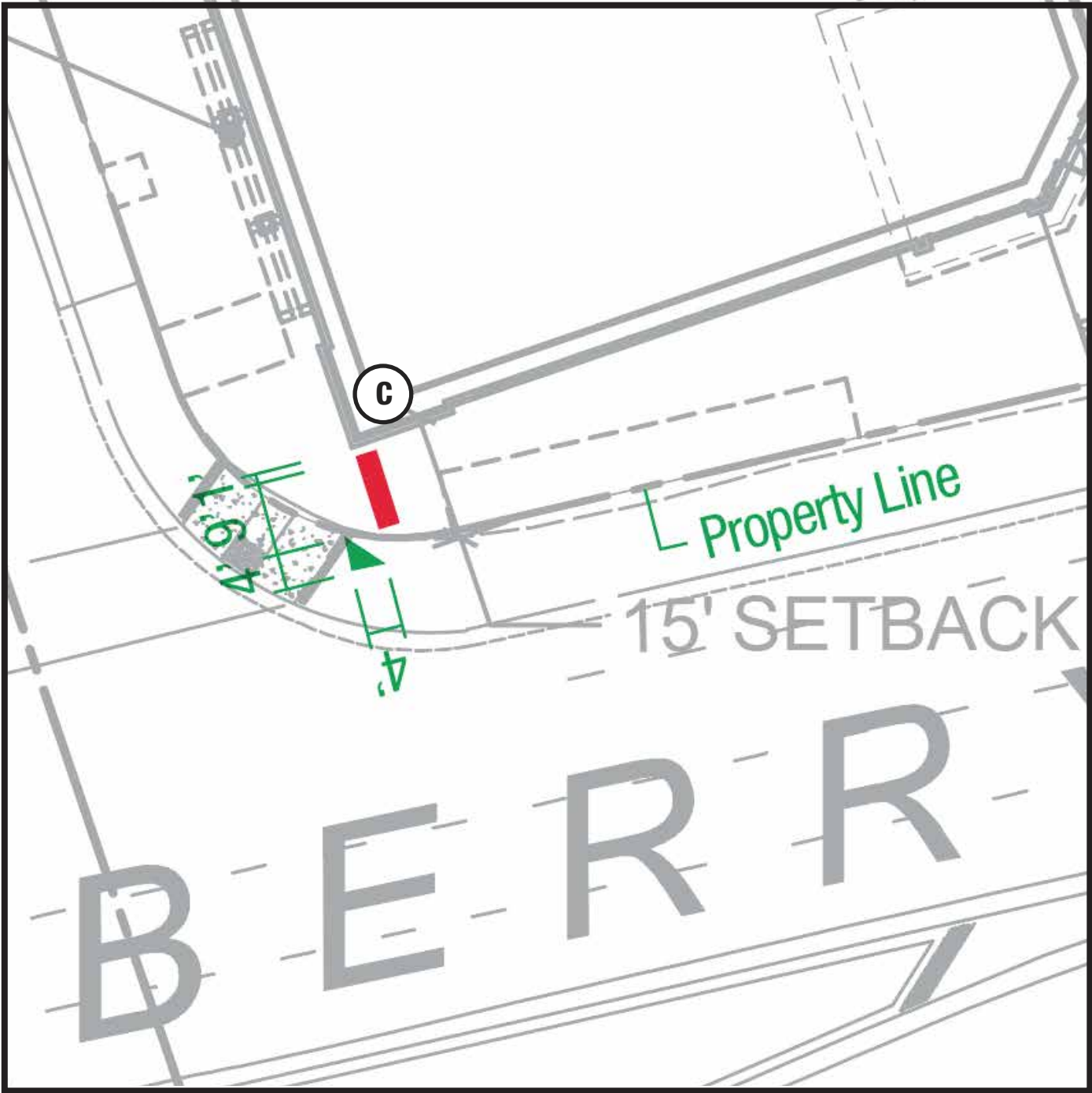
C ILLUMINATED MONUMENT SIGNS SPECIFICATIONS Scale: 3/4" = 1'-0"
Manufacture & Install one (1) D/F Illuminated Monument Signs, as shown



150 EXECUTIVE PARK BLVD., SUITE 2100
SAN FRANCISCO, CA 94134
T 415.869.6460
F 415.869.6480

CA STATE CONTRACTORS LICENSE #826051www.adart.com

| PROJECT: Market Park Anchor Monument | REVISION / DATE / DESCRIPTION | APPROVALS | CONCEPTUAL DRAWINGS ONLY: Dimensions are approximate and may change due to construction factors or exact field conditions. Colors shown are as close as printing will allow. Always follow written specifications. | SHEET |
|---|---|-----------|---|-------|
| LOCATION: 11861 Berryessa Rd, San Jose, CA | #1 01/18/19 Revised C & D, Added Site Map | SALES: | ALL RIGHTS RESERVED: This design has been created for you in connection with a project being planned for you by ADART. It may not be shown to anyone outside your organization, and may not be reproduced in any manner without prior consent. | 6 |
| DATE: 01/03/19 | #2 01/25/19 Revised A, Added Site Map | CUSTOMER: | | |
| SALES: Terry Long | #3 01/31/19 Revised Package | LANDLORD: | | |
| DESIGNER: Ron Sellers | #4 02/04/19 Updated Pylon on Site Map | | | |
| SCALE: See Callouts | #5 02/26/19 Updated Monument Heights & Setbacks | | | |
| SERVER: SFSERVER/ART DEPARTMENT/2018Artwork/Shoppes at Market Park Anchor Monument_190103 | | | | |



Site Map: Driveway Triangles



150 EXECUTIVE PARK BLVD., SUITE 2100
SAN FRANCISCO, CA 94134
T 415.869.6460
F 415.869.6480

CA STATE CONTRACTORS LICENSE #826051www.adart.com

| PROJECT: Market Park Anchor Monument | | REVISION / DATE / DESCRIPTION | APPROVALS | | CONCEPTUAL DRAWINGS ONLY: Dimensions are approximate and may change due to construction factors or exact field conditions. Colors shown are as close as printing will allow. Always follow written specifications. ALL RIGHTS RESERVED: This design has been created for you in connection with a project being planned for you by ADART. It may not be shown to anyone outside your organization, and may not be reproduced in any manner without prior consent. | SHEET |
|---|--|---|-----------|--|--|-------|
| LOCATION: 11861 Berryessa Rd, San Jose, CA | | #1 01/18/19 Revised C & D, Added Site Map | SALES: | | | |
| DATE: 01/03/19 | | #2 01/25/19 Revised A, Added Site Map | CUSTOMER: | | | |
| SALES: Terry Long | | #3 01/31/19 Revised Package | LANDLORD: | | | |
| DESIGNER: Ron Sellers | | #4 02/04/19 Updated Pylon on Site Map | | | | |
| SCALE: See Callouts | | #5 02/26/19 Updated Monument Heights & Setbacks | | | | |
| SERVER: SFSERVER/ART DEPARTMENT/2018Artwork/Shoppes at Market Park Anchor Monument_190103 | | | | | | |

#11 08/01/19 Updated Parcel Maps #12 10/04/19 Complete Package Build #13 10/07/19 Callouts Updated #14 10/11/19 Moved Sign C #15 11/20/19 Updated Corner Detail Sht 3 #16 11/26/19 Removed D